

SECTION 7, T.6N., R1.W., S.L.B. & M.

IN TOWN OF HARRISVILLE & OGDEN CITY

SCALE 1" = 400'

TAXING UNITS: 25, 359

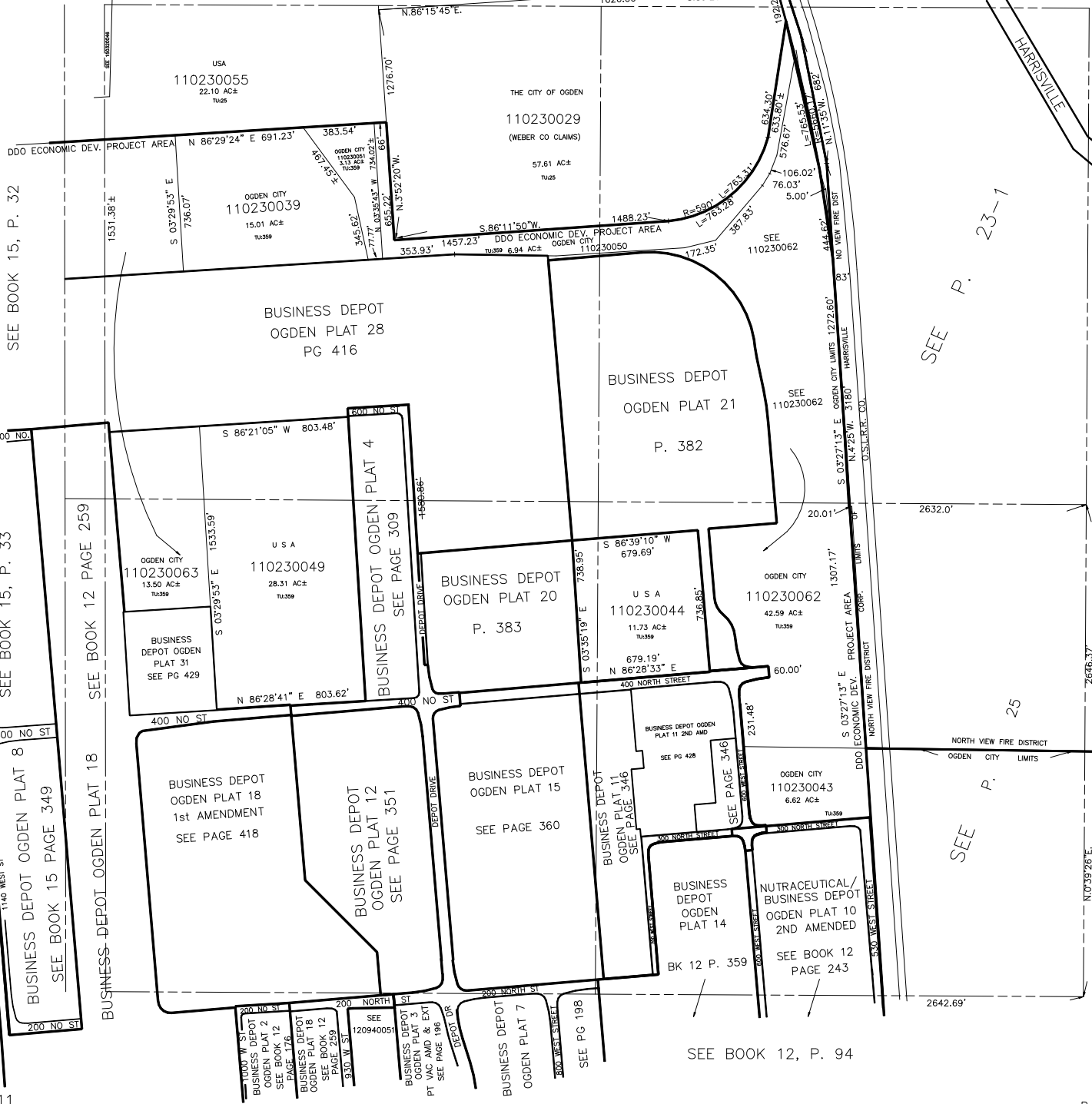
SEE P. 21

1/4 SEC LIN ???

SEE P. 22

1626.06' 431.01' S.89°20'15"E.

N.86°22'35"E.



SEE BOOK 15, P. 32

SEE BOOK 15, P. 33

BUSINESS DEPOT OGDEN PLAT 8
SEE BOOK 15 PAGE 349

SEE BOOK 12 PAGE 259

BUSINESS DEPOT OGDEN PLAT 18

BUSINESS DEPOT
OGDEN PLAT 28
PG 416

BUSINESS DEPOT
OGDEN PLAT 21
P. 382

BUSINESS DEPOT
OGDEN PLAT 20
P. 383

BUSINESS DEPOT
OGDEN PLAT 31
SEE PG 429

BUSINESS DEPOT OGDEN PLAT 4
SEE PAGE 309

BUSINESS DEPOT
OGDEN PLAT 18
1st AMENDMENT
SEE PAGE 418

BUSINESS DEPOT
OGDEN PLAT 12
SEE PAGE 351

BUSINESS DEPOT
OGDEN PLAT 15
SEE PAGE 360

BUSINESS DEPOT
OGDEN PLAT 11
SEE PAGE 346

BUSINESS DEPOT
OGDEN PLAT 14
BK 12 P. 359

NUTRACEUTICAL/
BUSINESS DEPOT
OGDEN PLAT 10
2ND AMENDED
SEE BOOK 12
PAGE 243

1000 W. ST
BUSINESS DEPOT
OGDEN PLAT 2
SEE BOOK 12
PAGE 259

200 NORTH ST
BUSINESS DEPOT
OGDEN PLAT 3
OGDEN PLAT 3
PT VAC AMD & EXT
SEE PAGE 196

200 NORTH ST
BUSINESS DEPOT
OGDEN PLAT 7
SEE PG 198

200 NORTH ST
BUSINESS DEPOT
OGDEN PLAT 7
SEE PG 198

SEE BOOK 12, P. 94

SEE P. 23-1

SEE P. 25

SEE P. 33

SEE P. 42